

Cequence AI Gateway

Making applications agent-ready in minutes – securely, without coding

Globally, organizations are racing to take advantage of the productivity gains promised by artificial intelligence (AI). Complementing today's web and mobile application channels, AI agents are rapidly establishing themselves as a new must-have capability to enable customers, partners, and employees. However, the tools needed to easily adopt agentic AI applications and workflows safely and efficiently at scale have been lacking.

CISOs and security-first engineering leaders realize the rush to connect their internal, external, and SaaS applications to agentic AI is outpacing necessary security guardrails, while CIOs are understandably concerned about the opportunity cost incurred by having to up-skill needed developers. Both want a solution that accelerates the realization of AI productivity and avoids insecure, one-off prototypes in favor of a scalable, enterprise-grade solution.

Cequence AI Gateway Overview

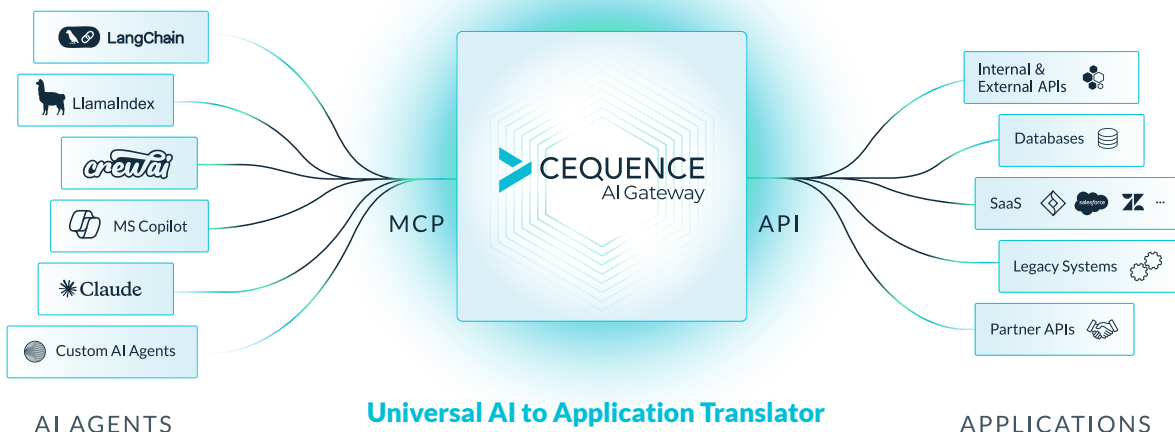
The Cequence AI Gateway enables organizations to unlock the promise of agentic AI productivity by easily and safely connecting agents to enterprise and SaaS applications. It transforms any application or API into an MCP-compatible endpoint in minutes, without coding.

Most Model Context Protocol (MCP) solutions available today serve testing and prototyping purposes well, but lack core enterprise features such as authentication, authorization, and monitoring. They also require the user to host the system somewhere, which adds another layer of complexity and management.

The Cequence AI Gateway addresses these concerns, transforming an organization's existing application, API, and data investments into dynamically discoverable resources for AI agents. Whether it's customer service connecting CRM, CCaaS, and Knowledge Management Systems, engineering connecting Jira and GitHub, or marketing enabling their marketing automation platform and CMS, the AI Gateway eliminates the coding, expertise, and time required by other solutions letting teams focus on the productivity gains from their new agentic AI capabilities.

AI Gateway at a Glance

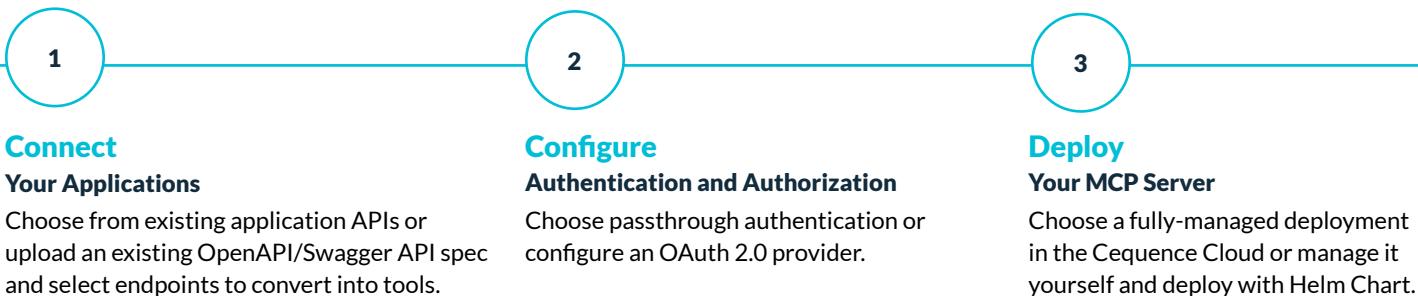
- ✓ **Your AI Easy Button**
MCP-enable applications in minutes without coding
- ✓ **Integrated Access Control**
Integrated end-to-end authentication and authorization
- ✓ **Monitoring and Visibility**
App/agent/user monitoring provides interaction visibility
- ✓ **Enterprise-Ready**
SaaS-based solution provides scalability, performance, and reliability



The Cequence AI Gateway is a SaaS solution offering scalability, performance, and reliability as well as integrated OAuth 2.0 access control and monitoring of user/agent/app interactions. Agentic AI is dependent on APIs, and Cequence's deep knowledge of how APIs are structured, used, and abused means users can trust that the AI Gateway was designed with security and scale in mind.

Simple as 1-2-3

Making an application agent-ready using the Cequence AI Gateway is simple:



AI Gateway Features

AI-Ready Apps in Minutes

Cequence AI Gateway delivers easy AI agent enablement to any internal, external, or SaaS application, without coding, in minutes. Avoids time and costs associated with up-skilling, coding, QA, integration, hosting, and ongoing management.



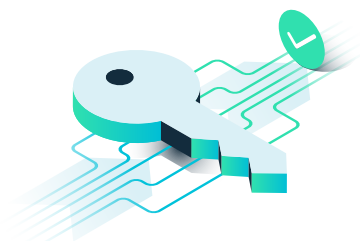
We Speak MCP

AI Gateway supports the Model Context Protocol (MCP) and enables agents to efficiently and securely access applications. You are seamlessly protected from future MCP protocol revisions, so there's no code updates required as the protocol evolves. Transform any application API into an MCP-compatible tool with just a few clicks.



End-to-End Authentication and Authorization

AI Gateway supports passthrough and OAuth 2.0-compliant identity infrastructure, ensuring appropriate identity-based access to systems and data while preventing unauthorized AI agent access.

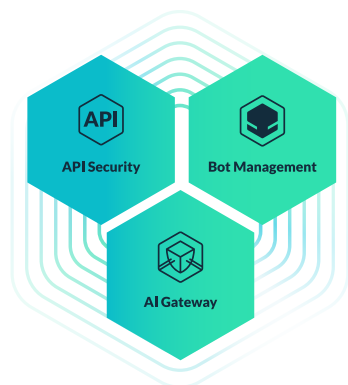


Monitoring & Visibility

Provides real-time visibility into AI-API traffic with full audit logging enabling detailed tracking of agent and user behavior, which applications are being accessed, and what API calls agents are making. Overall activity trends and detailed MCP server and tool usage information are available at a glance.

Built for the Enterprise

AI Gateway is a SaaS-based enterprise solution, offering the scalability, performance, and reliability that the world's largest organizations demand. Continuous environment monitoring, OAuth 2.0 IdP support, RBAC, and discrete pre-prod/prod modes are standard.



Application and API Protection

The optional addition of Cequence's UAP platform provides automatic generation of needed API specs required by the AI Gateway as well as protection from agent-fueled attacks, abuse, and fraud. Bot attacks, data scraping, and advanced business logic abuse are all concerns exacerbated by malicious AI agents, and Cequence UAP excels in defending against such attacks.



Summary

The Cequence AI Gateway is the easiest, fastest, and safest way to empower your employees, partners, and customers to interact with your organization, its applications, and data. Whether you're just getting started and evaluating AI agent platforms or are already embarking on projects to deliver the benefits of agent access, Cequence has you covered.